

# Technical data sheet

Product features



## Freezing cabinet 700 l without compressor pastry version EN 40x60, stainless steel

<b>Model</b>	<b>SAP Code</b>	00012011
ENFP 700 R	<b>A group of articles - web</b>	Refrigeration and freezer cabinets

<b>SAP Code</b>	00012011	<b>Net Weight [kg]</b>	142.20
<b>Net Width [mm]</b>	733	<b>Loading</b>	230 V / 1N - 50 Hz
<b>Net Depth [mm]</b>	847	<b>Gross Volume [m3]</b>	1.445
<b>Net Height [mm]</b>	2090	<b>Net Volume [m3]</b>	1.298

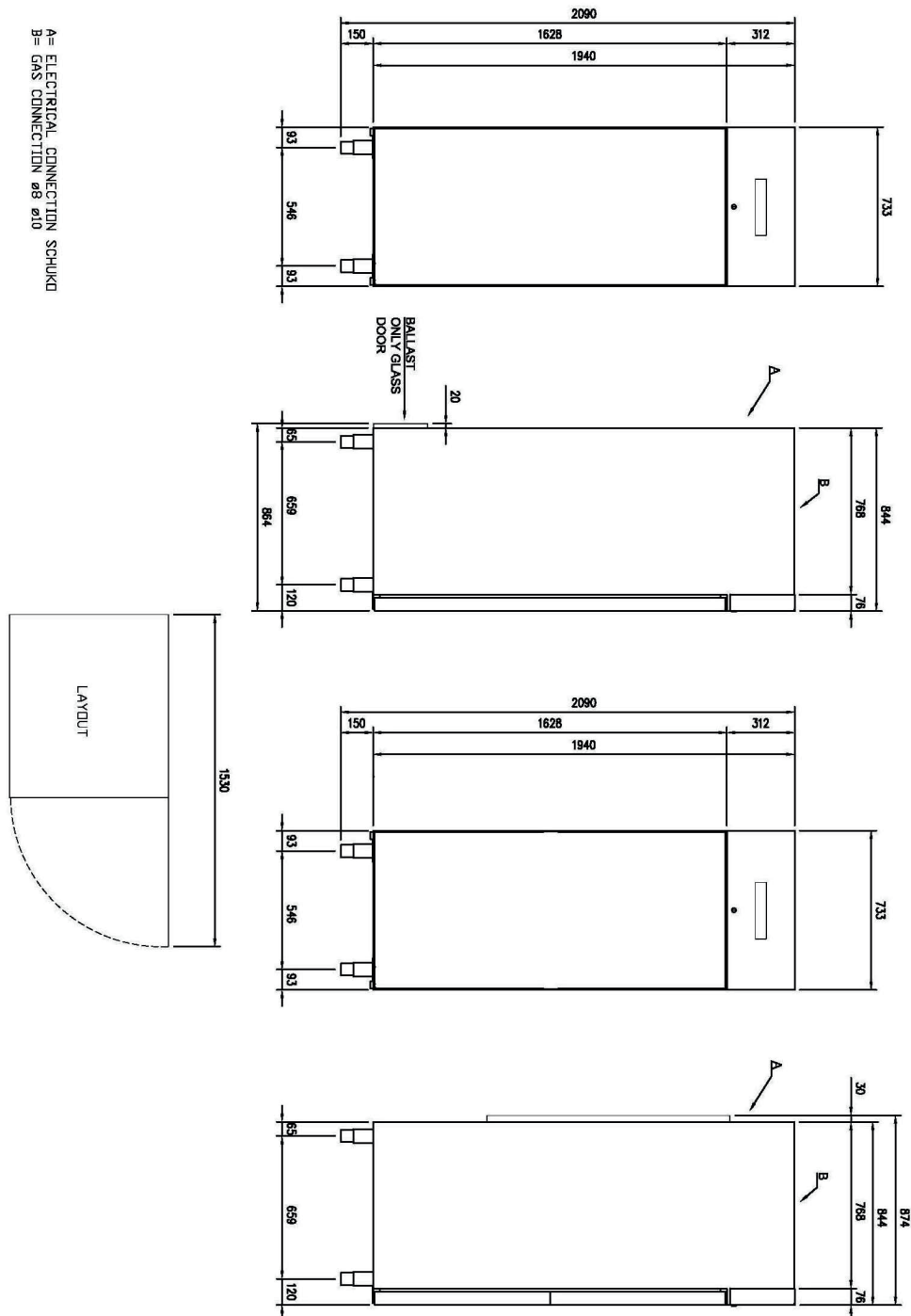
# Technical data sheet

Technical drawing



## Freezing cabinet 700 l without compressor pastry version EN 40x60, stainless steel

<b>Model</b>	<b>SAP Code</b>	00012011
ENFP 700 R	<b>A group of articles - web</b>	Refrigeration and freezer cabinets



# Technical data sheet

Product benefits



## Freezing cabinet 700 l without compressor pastry version EN 40x60, stainless steel

<b>Model</b>	<b>SAP Code</b>	00012011
ENFP 700 R	<b>A group of articles - web</b>	Refrigeration and freezer cabinets

- 1** | **Insulation 90mm**  
minimal losses
- 2** | **Two-sided opening**  
location variability
- 3** | **All-stainless design**  
corrosion resistance
- 4** | **Automatic defrosting**  
nothing needs to be watched
- 5** | **Wheels, legs**  
variability
- 6** | **High energy class**  
minimal energy loss  
high efficiency  
guaranteed chilled food

# Technical data sheet

Technical parameters



## Freezing cabinet 700 l without compressor pastry version EN 40x60, stainless steel

<b>Model</b>	<b>SAP Code</b>	00012011
ENFP 700 R	<b>A group of articles - web</b>	Refrigeration and freezer cabinets

**1. SAP Code:**

00012011

**2. Net Width [mm]:**

733

**3. Net Depth [mm]:**

847

**4. Net Height [mm]:**

2090

**5. Net Weight [kg]:**

142.20

**6. Gross Width [mm]:**

763

**7. Gross depth [mm]:**

873

**8. Gross Height [mm]:**

2170

**9. Gross Weight [kg]:**

157.20

**10. Device type:**

Electric unit

**11. Loading:**

230 V / 1N - 50 Hz

**12. Min ambient temperature [°C]:**

10

**13. Max ambient temperature [°C]:**

43

**14. Device properties 2:**

Bakery

**15. Gross Volume [m3]:**

1.445

**16. Net Volume [m3]:**

1.298

**17. Adjustable feet:**

Yes

**18. Unit:**

No